



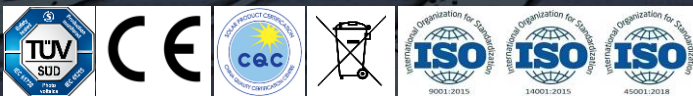
# SolarVela MAX

## TOPCON Flexible Module 550-560W

Ultralight | Flexible | Anti-hotspot | Crack-free

Powered by TSR-Armor™ Technology

### Quality Assurance



Product  
Warranty



Performance  
Warranty



Fully Insured  
by CCIC



### Low-weight

Areal Weight: 2.9 kg/m<sup>2</sup>, Less than 30% of Traditional Glass-based Solar Modules



### Micro-crack Resistance

TSR-Armor™ Technology: Resistant to Hail and Vibration without Cell Cracks and Power Loss.



### Thin

Thickness: 1.8 mm (excl. junction box), Less than 50% of Traditional Glass-based Solar Modules



### Hotspot Optimization

6-Bypass Architecture & Micro-crack Resistance: Curbing Hot-spots in Shading & Harsh Conditions



### Flexible

Minimum Bending Radius: 0.3 m (No Cell Cracks or Power Loss)



### Easy-to-install

Modules Can be Directly Bonded to Installation Surface by Weather-resistant Glue

**560W**

Max-power

**21%**

Efficiency

**0-+5W**

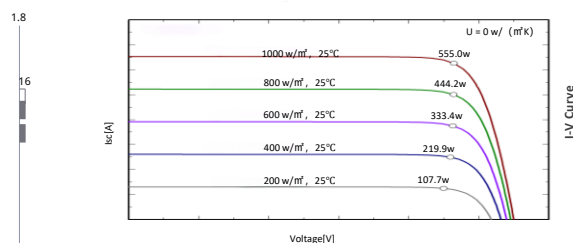
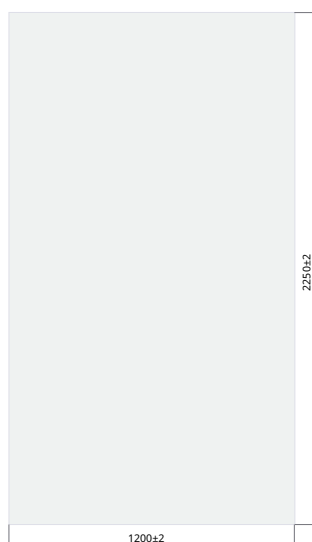
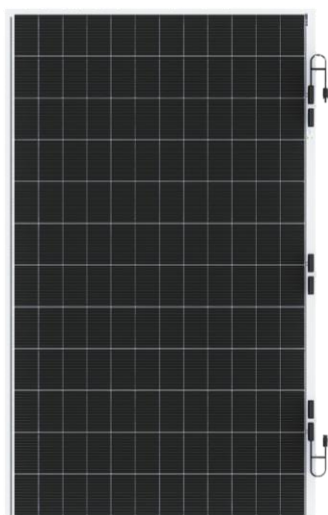
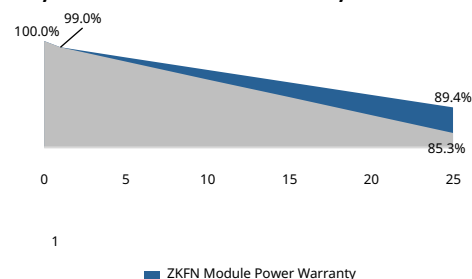
Power-tolerance

**≤1%**

First-year Degradation

**≤0.4%**

Annual Degradation from Year 2-25

**25-year Linear Performance Warranty**

ZKFN Module Power Warranty

**Electrical performance parameters** (STC:AM1.5 1000W/m<sup>2</sup> 25°C; test error: ±3%; NMOT:800W/m<sup>2</sup> 20°C 1m/s) Power Tolerance:0-+5W

Module Type	ZKFN B1 010A-550		ZKFN B1 010A-555		ZKFN B1 010A-560	
	STC	NMOT	STC	NMOT	STC	NMOT
Pmax [W]	550	414.15	555	417.92	560	421.68
Vmp [V]	45.19	42.34	45.25	42.40	45.29	42.44
Imp [A]	12.18	9.79	12.27	9.87	12.37	9.95
Voc [V]	52.96	50.31	53.01	50.36	53.05	50.40
Isc [A]	12.95	10.40	12.92	10.43	12.96	10.46

**Mechanical parameters**

Cell Type	Topcon cell 182.2*91.87mm
Dimension	2250*1200*1.8mm (junction box not included)
Weight	7.6kg
Output Line	4mm <sup>2</sup> , wire length 400mm (customizable)
Connector	Staubli Electrical Connectors AG – MC4 EVO2 Series
Junction-box	6 IP68-rated junction box
Backboard Color	White

**Temperature coefficient**

Temperature-coefficient of PMPP	[%/°C]	-0.29
Temperature-coefficient of Voc	[%/°C]	-0.26
Temperature-coefficient of Isc	[%/°C]	+0.045
NOCT	[°C]	45±2

**Application parameters**

Max. System Voltage	DC 1500V
Power Tolerance	0-+5W
Operating Temperature Range	-40°C-+85°C
Max. Series Fuse Rating	25A
Mechanical Load	Front 5400Pa, back 2400Pa
Wind Resistance Class	Lv.17
Hailstone Test	25mm hailstone at the speed of 23m/s

**Package**

Transportation	Container size	Quantity (pcs)	Quantity (per pallet)
Container	40' HQ	1260	70
Platform Trailer	13m	1400	70
Platform Trailer	17.5m	1960	70



Shandong ZKFN Solar Technology Co., Ltd.

Tel.: +86 400 6768 100 Web.: [www.zkfn.com](http://www.zkfn.com)

Add.: Factory 1 of XinShenglin, LvHaiHui Intelligent Manufacturing Industrial Park, Jining

Economic Development Zone, Jining, Shandong, China

\*NOTE: ZKFN Solar reserves right to update the specification without notice. Please always obtain the most recent version of the datasheet.

202605\_V1.3.1\_EN